

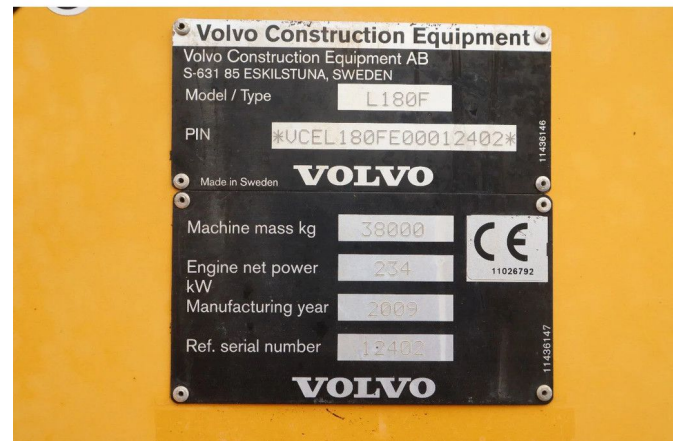
## Volvo L180 F HL | HIGH-LIFT | LOG STACKER | HOLZ GRAPPLE

### COMMON

ID	113244-5
Marke	Volvo
Konstruktion	Baumstammlader

### PROPERTIES

Baujahr	2009
Betriebsstd.	32.607
Fahrzeug-Identifizierungsnummer	VCEL180FE00012402
Gewicht	38.000 kg



### ZUBEHÖR

### BESCHREIBUNG

Emissieklasse: Stage IIIA

For sale:

Volvo L180F  
 Year: 2009  
 Hours: 32.607  
 Operating weight: 38.000 kg

Engine & Transmission:  
 Volvo  
 6-cylinder diesel turbocharged  
 Power: 234 kW / 318 HP  
 4 step powershift gearbox

Hydraulics & equipment:  
 Log stacker with clamp

General information & options:  
 Central lubrication  
 LED working lights

Rearview camera  
Radio  
Joystick steering

Documents:  
CE certificate  
Service history  
Instruction book  
Parts book

Discription:  
Good working Volvo wood stacker. Ready for work!

Of course, we have more pictures and information available,  
and we are looking forward to helping you.

Worldwide delivery is possible!

For more information, please contact  
Office: 0031-527246140  
E-mail: [info@hulleman.com](mailto:info@hulleman.com)