

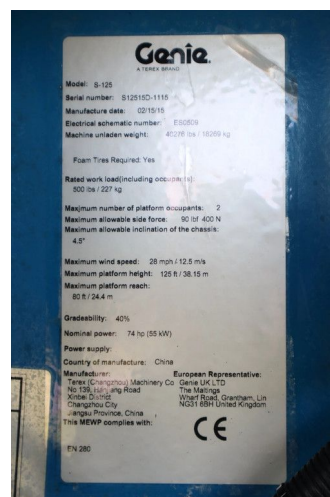
## Genie S-125 | 40 METER | 227 KG

### COMMON

ID	113963
Make	Genie
Construction	Aerial platform

### PROPERTIES

Year	2015
Operating hours	2.875
Vehicle identification number	S12515D-1115
Length	1.220 cm
Width	250 cm
Height	305 cm
Lifting height	3.810 cm
Lifting capacity	227 cm



### ACCESSORIES

### DESCRIPTION

For sale:

Genie S-125  
 Year: 2015  
 Hours: 2.875  
 Operating weight: 18.269 kg

Engine:  
 Deutz TD 2011  
 Power: 55 Kw / 74 HP  
 Diesel  
 4x4 driven  
 Good tyres

Performance:  
 Extendable undercarriage  
 Max. working height: 40.1 m  
 Max platform height: 38.1 m  
 Max horizontal reach: 24.38 m  
 Platform capacity: 227 kg