

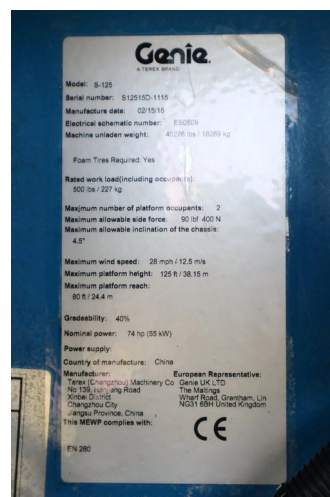
Genie S-125 | 40 METER | 227 KG

COMMON

ID	113963.1
Make	Genie
Construction	Aerial platform

PROPERTIES

Year	2015
Operating hours	2.875
Vehicle identification number	S12515D-1115
Length	1.220 cm
Width	250 cm
Height	305 cm
Lifting height	3.810 cm
Lifting capacity	227 cm



ACCESSORIES

DESCRIPTION

For sale:

Genie S-125
 Year: 2015
 Hours: 2.875
 Operating weight: 18.269 kg

Engine:
 Deutz TD 2011
 Power: 55 Kw / 74 HP
 Diesel
 4x4 driven
 Good tyres

Performance:
 Extendable undercarriage
 Max. working height: 40.1 m
 Max platform height: 38.1 m
 Max horizontal reach: 24.38 m
 Platform capacity: 227 kg