

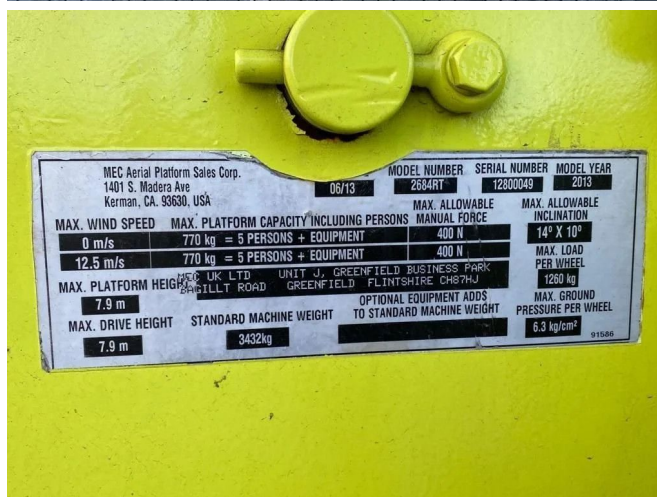
MEC 2684 RT SPEEDLEVEL | 9.7 METER | 770 KG

COMMON

ID	112145.1
Make	MEC
Construction	Aerial platform

PROPERTIES

Year	2013
Operating hours	1.169
Vehicle identification number	12800049
Length	338 cm
Width	213 cm
Height	178 cm
Lifting height	790 cm
Lifting capacity	770 kg



ACCESSORIES

DESCRIPTION

Damages: none
Max reach:

For sale:

MEC 2684 RT SPEEDLEVEL
Year: 2013
Hours: 1.169 H
Weight: 4.580 kg

Performance:
Platform levelling
14° levelling side to side
10° levelling front to back
Working height: 9.9 m
platform height: 7.9 m
Lift capacity: 770 kg
Length platform retracted: 3.65 m
Length...

MEC Aerial Platform Sales Corp. 1401 S. Madera Ave Kerman, CA. 93630, USA		MODEL NUMBER 2684RT	SERIAL NUMBER 12800049	MODEL YEAR 2013
MAX. WIND SPEED	MAX. PLATFORM CAPACITY INCLUDING PERSONS + EQUIPMENT	MAX. ALLOWABLE MANUAL FORCE	MAX. ALLOWABLE INCLINATION	
0 m/s	770 kg = 5 PERSONS + EQUIPMENT	400 N	14° X 10°	
12,5 m/s	770 kg = 5 PERSONS + EQUIPMENT	400 N	MAX. LOAD PER WHEEL	
MAX. PLATFORM HEIGHT	MEC UK LTD UNIT J. GREENFIELD BUSINESS PARK SAGILLT ROAD GREENFIELD FLINTSHIRE CHESHIRE	OPTIONAL EQUIPMENT ADDS TO STANDARD MACHINE WEIGHT	1250 kg	
7.9 m	MAX. DRIVE HEIGHT	STANDARD MACHINE WEIGHT	MAX. GROUND PRESSURE PER WHEEL	
7.9 m		3432kg	6.3 kg/cm²	